



HUNZA

SUSTAINABILITY
REPORTING

2024

Content

1. About the Report	2
Hunza's Vision.....	2
Hunza's Mission	2
Hunza's Values	3
2. Facility Introduction and Features	3
1.1.1 Entrance Control Building:	3
1.1.3 Winter Garden:.....	4
1.1.4 Cafe Building:.....	4
1.1.5 Yoga Building:	4
1.1.6 Bungalows:	5
1.1.7 SPA Center:.....	5
1.1.8 Infirmary:.....	5
1.1.9 Entrance-Exit Tag-Sculpture:	5
1.1.10 Mini Pond-Decorative Pool:	6
1.1.11 Open Activity Area:	6
3. Sustainability Team	7
4. Reduction of Environmental Impacts.....	7
5. Personnel and Work Life	11
1. Employee Well-being and Health.....	11
2. Work-Life Balance	11
3. Training and Development	11
4. Fair Working Conditions	11
5. Sustainability Within the Community.....	12
6. Social Initiatives	13
7. Cultural Studies.....	18

1. About the Report

Our facility is committed to fulfilling the obligations of the Türkiye Sustainable Tourism Program in relation to sustainability and to continuously improving the sustainable management system to enhance sustainability performance. Our management system is continuously reviewed due to the state of the industry, as well as environmental, social, technological, economic, and cultural risks, and legislative changes. If necessary, the system and policies are updated.

Our sustainability policies reflect our company's commitment to this issue. Based on this, all our actions will be directed toward this intention and direction. Our goal is to transform the principle of sustainability into a 'way of doing business' in the core areas of our hotel and embed it into our corporate memory. The success and continuity of our efforts can only be achieved by working together with our employees, guests, business partners, suppliers, solution partners, and all stakeholders in our immediate surroundings, expanding this partnership, and strengthening it day by day. Raising awareness among employees, providing them with opportunities to engage in the process, and enabling them to contribute to development opportunities are considered invaluable as an integral part of the sustainability approach. In this context, our annual training plans and orientations include topics such as social rights, support for local employment, preservation of natural habitats, protection of wildlife, nearby historical and tourist sites, cultural richness, ecological diversity, energy and water conservation, environmental activities—our recycling system, and a focus on local resources. Efforts are made to promote the philosophy of sustainability within the organization. The primary goal is to provide strategic support to all company divisions in improving business outcomes through human resources management aligned with business strategies, fostering a high-performance culture, and contributing to value creation for all stakeholders. Additionally, professional training sessions—tailored to orientation programs and annual training needs—aim to enhance awareness in every aspect. Sustainability initiatives are coordinated with Hotel Management, and our activities and performance in this area are always open to stakeholder expectations and feedback. As of 2024, we have initiated our sustainability efforts. In line with this, we aim to share our progress with our management, employees, guests, suppliers, and all other partners, thereby increasing awareness and transforming it into shared goals and successes.

This sustainability report includes data for the 2024-2025 period.

The vision, mission, and values of Hunza Wellness Living Facility are shaped around a philosophy that aims to promote healthy living, sustainability, and the holistic balance of mind, body, and spirit. This philosophy is reflected both in the facility's internal structure and in the services offered to guests.

Hunza's Vision

To be a pioneering wellness center that offers a harmonious, healthy, and balanced life in tune with nature for a sustainable world. Hunza's vision is to enhance individuals' quality of life by combining the concepts of healthy living and sustainability with traditional knowledge adapted to the modern world. In the future, it aims to become a globally recognized center in the fields of wellness and sustainability.

Hunza's Mission

To elevate individuals' physical, mental, and spiritual health to the highest level by offering an eco-friendly, sustainable, and holistic approach. Hunza's mission is to instill a holistic understanding of health in its guests and employees and to help them embrace a sustainable lifestyle. To achieve this goal, it aims to ensure individuals remain healthy both physically and mentally by offering personalized health, nutrition, fitness, and therapy programs.

Hunza's Values

1. **Sustainability:** Hunza respects nature and the environment in all its operations. It operates with eco-friendly technologies and sustainable practices, protecting natural resources. It adopts environmentally conscious approaches in energy, water, and waste management.
2. **Holistic Health:** Hunza believes that health encompasses not only physical but also mental and spiritual well-being. It offers a holistic approach that considers the balance of body, mind, and spirit.
3. **Respect for Nature:** Hunza values the importance of being close to nature and benefiting from its healing power. The natural environment around the facility is preserved, and practices that support this ecosystem are encouraged.
4. **Personalized Approach:** Every individual's needs are unique. Therefore, the programs offered at Hunza are specifically designed to meet guests' individual health goals. Nutrition plans, fitness programs, and therapy options are tailored to each person.
5. **Balance of Innovation and Traditional Knowledge:** Hunza combines the best of modern science and technology with traditional health and healing methods. It offers innovative solutions by integrating the health secrets of the Hunza people with the health principles of the modern world.
6. **Community and Social Responsibility:** Hunza contributes to social responsibility projects by collaborating with local communities. It also supports the development of the local economy by sourcing natural products and services from local producers.
7. **Sensitivity to People and Nature:** As a business that respects its guests, employees, and environment, Hunza adopts an approach that is sensitive to both people and nature. It prioritizes the well-being of its team members and provides a healthy working environment.

Hunza, in line with this vision, mission, and values, continues its efforts to help individuals adopt a healthy lifestyle and to be among the sustainable, eco-friendly wellness centers worldwide.

2. Facility Introduction and Features

Our facility is located at Maşukiye Mahallesi, Türbe Sokak No:25 Kartepe/Kocaeli. We offer 12 bungalows within our facility.

Movement and fresh air are essential elements of sports and healthy living. Our facility is designed to provide environments, buildings, green spaces, and activity areas within nature where members can complete their detoxification process under healthy conditions, escape the routine of the city, distance themselves from the negative impacts of daily life, and realize their potential for a healthier lifestyle.

The buildings and areas within the facility, along with their intended uses, are as follows:

1.1.1 Entrance Control Building:

At the entrance of the planning area, there is an entrance control building. This 9 m² security building allows for the control and supervision of entries and exits, ensuring security and providing guidance to visitors regarding facility use.

1.1.2 Main Building:

The main building includes health, sports, and administrative units, consisting of a basement, a ground floor, and an attic.

The total enclosed usable area (construction area) is 677.6 m². The floors and features of the building, along with their usage, are as follows:

Basement Floor:

The basement floor, with an area of 249.60 m², includes sports facilities, Mat Pilates, Equipment Pilates, Hypoxi, Cardio, Slimmer rooms, as well as a storage and reserved room.

Ground Floor:

The main building on **the ground floor**, with an area of 304 m², consists of business-oriented units such as the entrance lobby, reception-registration, and accounting, along with other units supporting sports and health activities.

Changing rooms, showers, and WC areas for use before and after sports activities are located on the ground floor. The sports areas in the basement are connected to these units by stairs.

In the lobby area, there is a relaxation-waiting area for guests, a vitamin bar unit, and WC.

A mini hair salon, for use after activities, is also located on the ground floor opposite the shower and WC areas.

The ground floor also features a "VIP Pilates" room that offers physiotherapist and pilates services.

The office of the facility's authorized dietitian is located at the building entrance.

The Social Area, planned as a "Staff Rest Area," is located at the back of the main building, connected to the lobby.

Attic-Gallery Floor:

The Attic space, covering an area of 124 m², is a design connected to the ground floor lobby area through a gallery, utilizing the height permitted by the roof slope.

The attic floor includes a VIP massage room, a doctor's consultation room, skincare units, a meeting room, and a restroom.

1.1.3 Winter Garden:

This 40 m² building is located right next to the main building. It has been designed as a space for artistic activities. The winter garden, which includes kitchen and WC units, is planned with an operable glass system.

Additionally, a 16 m² wooden pergola has been designed on the adjacent terrace area. This space has been designated as a music room.

1.1.4 Cafe Building:

The Café Building, covering an area of 159 m², consists of a WC, kitchen, storage, and an indoor seating area. It is a single-story structure built with wood, stone, and glass. Designed as a service facility, it is located in front of the main building, adjacent to the large event area and mini pond. Additionally, there is a terrace area by the lake, intended for use during the spring and summer months.

The café will serve guests utilizing the facility's services. Its most notable feature is the availability of gluten-free and sugar-free organic food and beverages, as well as the ability to prepare personalized diet meals.

1.1.5 Yoga Building:

The building, with a maximum height of 6.50 meters and an area of 128 m², is a single-story architectural structure featuring high ceilings and constructed with wood, stone, and glass in a quiet area of the project site, specifically designed for yoga activities.

Yoga is of great importance as an art or science of healthy living, allowing us to maintain the balance between body, soul, and mind without losing this trio, helping us relieve mental fatigue. By combining both physical and mental disciplines, it enables individuals to stay healthier in every aspect. The architecture of the yoga building reflects this harmony by integrating the healing, breath, and energy drawn from nature with the four elements.

A large green garden has been designed around the building for outdoor yoga activities in the spring and summer. Additionally, a mini pond located between the main building and the yoga area, along with a fully grassed large event area, has been planned as alternative spaces for yoga events.

1.1.6 Bungalows:

To embrace the wellness lifestyle philosophy, we complete our physical and mental transformation scientifically in 21 days. The Hunza Camp Wellness Living Facility facilitates guests' stays in certain periods, allowing them to embark on a transformation journey during their visit. The bungalows, designed for stays of 2, 5, 7, 14, or 21 days, provide a private and peaceful environment where guests can complete personalized transformation programs.

There are 12 bungalow units, each with a single-story structure, peaked roof, and constructed using wood and stone, with a maximum height of 6.50 meters and an indoor area of 58 m². The interior design is inspired by a bohemian style.

1.1.7 SPA Center:

The spa center, located just below the 12 bungalow units, is designed as a 175 m² indoor facility available for guests. Designed in accordance with wellness lifestyle standards, the spa area includes a salt room, steam room, sauna, cold room, therapy rooms (massage rooms), and a colon cleansing room. Our pool is built to be used both as an indoor and outdoor facility, suitable for water sports. In alignment with the purpose of being a health-focused facility, this special pool will offer equipment-based sports such as aqua cycling, aqua board, aqua jumping, aqua pole, aqua boxing, aqua drums, aqua fitness, aqua steps, and more.

1.1.8 Infirmary:

Due to facility operations, a 9 m² infirmary is located next to the main building to ensure that healthy lifestyle activities can be conducted in a controlled and safe manner. Our nurse is available 24/7, and health checks of visitors are monitored by our contracted doctors.

Our contracted medical team includes:

- Cardiovascular Surgeon Assoc. Prof. Dr. Orhan Findık
- Endocrinology & Metabolism Specialist Dr. Tuğba Arkan
- Bioresonance & Functional Medicine & Healthy Nutrition Specialist Dr. Fatih Güray
- Psychologist Serra Hoşcan Gülseren
- Dietitian Türkan Dayıoğlu
- Physiotherapist Ömer Sayma

Other Architectural Elements and Activity Areas:



Orhan Oray

1.1.9 Entrance-Exit Tag-Sculpture:

Artistic works have been added to the project with the belief that they will add significant value to the building and the business structurally. Inspired by the philosophy of "Return to Essence" (rebellion, initiation of struggle, and acceptance), we have included a sculpture by artist Orhan Oray (sculptor) that represents the strength of the Hunza woman and is designed specifically for the facility. This sculpture, located right next to the facility's vehicle entrance, stands at 9.5 meters tall and narrates the story of returning to one's essence. Additionally, Bilal Hakan Karakaya's work titled "Is dying actually to be born, or is being born actually to die?" is displayed at the entrance.

These sculptures, which represent Hunza Camp, are designed to make

visitors feel a holistic approach (body, mind, and spirit) as they pass through them when entering the facility. From the outside, they give no clue to their meaning, but as visitors enter, they experience the essence of art and feel its healing power.



Bilal Hakan Karakaya

1.1.10 Mini Pond-Decorative Pool:

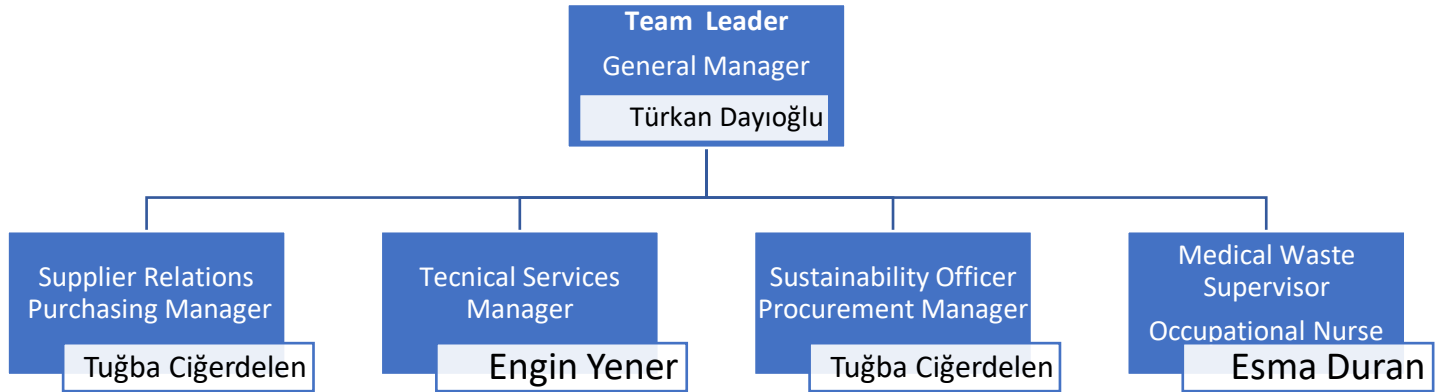
This 242 m² water feature, with a height of 40 cm, which we refer to as a decorative pool or mini pond, is positioned at the heart of the wellness living facility. Healing through the four elements has been a practice since ancient times. In this method, the energies of natural elements like water, air, fire, and earth are used to support a person's physical, mental, and spiritual health. For this reason, a natural mini pond with stones and water plants has been designed in a visible area between the main building, the café, and the large event space.

1.1.11 Open Activity Area:

This 600 m² green space, designed right next to the mini pond at the center of the project area, serves as a multipurpose activity area where various events can be held within the facility. As mentioned above, this area is designed to harness the healing power of the four elements, making it suitable for activities such as yoga, pilates, and fitness. It can accommodate both small groups and larger gatherings.

With events where experts like Nardane Kuşcu (Nar Anne), Güler Sabancı (Businesswoman), and Aşkim Kapişmak (Author) will participate as speakers, the facility, where knowledge and science are shared, will continue to host impactful organizations that make a mark both in the city and across the country.

3. Sustainability Team



Sustainability Teams have been established in our facility to carry out environmental and sustainability initiatives, with roles defined by the general manager.

Supplier Relations Officer: Executes the environmental and efficient procurement activities defined within the Sustainability Management System and evaluates support for local suppliers.

Technical Services Officer: Monitors the consumption of resources such as electricity, water, and natural gas in our facility and researches new technologies and projects to reduce consumption, providing updates to the team leader.

Sustainability Officer: Oversees all environmental, cultural, and social activities, ensuring compliance with sustainability requirements.

Medical Waste Officer: Responsible for monitoring, storing, and ensuring the disposal of medical waste generated in our facility by licensed companies.

4. Reduction of Environmental Impacts

ENVIRONMENTAL PROTECTION AND WASTE MANAGEMENT POLICY

In our business, we prioritize protecting the environment, preventing pollution, and reducing our negative impact on the environment. To achieve this, we:

- Ensure compliance with legal regulations and strive to minimize our environmental impact.
- Make an effort to effectively separate our waste based on source, type, and hazard classification.
- Understand that using hazardous materials and chemicals only when necessary and in limited amounts reduces both environmental impact and waste quantity.

- Prefer "recyclable" and "environmentally friendly" labeled products in our materials to contribute to environmental protection and create opportunities for reuse.
- Limit the use of single-use items, such as paper, napkins, toilet paper, and packaging, to minimize waste.
- Store waste properly in designated areas based on its characteristics and ensure it is handed over to licensed/authorized companies within legal storage time limits, keeping records.
- Strive to use water, energy, and all natural resources efficiently. We share this sensitivity with our employees, guests, and suppliers.
- Measure our environmental management performance, set targets, monitor data, and work towards improvement.
- Aim to educate our employees on environmental issues and enhance their awareness.

ELECTRICITY CONSUMPTION

- LED systems are used in 90% of the lighting throughout the hotel.
- Exterior lighting is equipped with a timer system that adjusts based on daylight.
- Energy-saving comfort glass is installed across the hotel.
- Double-layered drywall, gas concrete, composite, and fiberglass insulation are used for building insulation.
- Frequency-controlled booster pumps and air conditioning systems are in place.
- Staff receive training on sustainability and energy efficiency. We prioritize suppliers within close proximity to the region for products and services.
- An electric vehicle charging station is being installed.

WATER CONSUMPTION

- We use water-saving equipment to reduce overall water consumption without compromising health, hygiene, and guest satisfaction.
- We inform guests about water consumption and provide training to our employees on this topic.
- By using low-flow faucets and showerheads, we prevent unnecessary water usage.
- Our staff are trained to detect and prevent water leaks in room toilets, and we encourage guests to report any leaks they notice.
- We irrigate our eco-friendly garden using drip and sprinkler systems. Additionally, an automated irrigation system minimizes water consumption.
- Towel and linen changes in rooms are carried out according to guest requests, and guests are informed about this policy. If there is no request, changes are made every two days.
- Rainwater is collected and stored in a 100-ton tank, then used for garden irrigation and decorative fountains.



CHEMICAL MANAGEMENT

Chemicals are substances we use in many areas of our lives that make life easier but can also have harmful effects and lead to adverse outcomes. In our facility, chemicals are used in cleaning activities. Cleaning with environmental awareness means cleaning hygienically while minimizing negative impacts on health and the environment. The potential environmental harm can be minimized not only by using environmentally friendly cleaning products but also by using these products sparingly and adjusting their dosage properly. Thus, the total environmental impact of chemicals can be significantly reduced.

Our priority is to ensure that all chemicals we use are approved, labeled, and appropriately packaged, and that we have received their SDSs (Safety Data Sheets). Employees who will use chemicals are trained on the proper use, dosage, and methods outlined in the SDSs, as well as on the personal protective equipment requirements and the "Emergency Measures for Chemical Spills" guidelines. Our chemical storage areas are equipped with necessary precautions to prevent leaks, spills, and other potential environmental hazards. Chemical storage is done according to the type of chemical, the manufacturer's storage instructions, and relevant regulations.

We work with relevant companies for the safe disposal of chemicals and track chemical waste. We monitor our chemical usage, provide employee training to prevent waste and misuse, and prefer concentrated products whenever possible.

For pest control, we ensure that the products we use are safe for human health and the environment. We also try to rely more on natural measures (such as fly traps and sticky paper) whenever possible.



5. Personnel and Work Life

At the Hunza Wellness Living Facility, the concept of sustainability is not limited to environmental sensitivity; it also encompasses personnel and work life, which are managed according to these principles. The sustainability approach is addressed broadly to enhance employee well-being, work-life balance, and long-term workforce productivity. The key elements of sustainability in personnel and work life at Hunza are:

1. Employee Well-being and Health

Hunza's mission is to promote a healthy lifestyle for both its guests and employees. Various programs are implemented to support the physical and mental health of employees:

- **Healthy Living Programs:** Employees can participate in yoga, meditation, and sports activities offered by the facility at no cost.
- **Balanced Nutrition:** Healthy and balanced meals are provided for employees. Nutrition support is offered, especially in line with diet plans prepared by nutritionists.
- **Mental Health:** Regular training sessions and workshops are organized to enhance employees' stress management and motivation.

2. Work-Life Balance

Hunza encourages its employees to maintain a balance between their personal and professional lives. In this regard:

- **Flexible Working Hours:** Flexible working hours are applied to help employees balance their work and personal lives.
- **Leave Policy:** Annual leave rights and vacation periods are organized to allow employees to rest physically and mentally.

3. Training and Development

Training and development programs play an important role in helping employees grow and advance in their careers:

- **Continuous Education:** Regular trainings and seminars in fields such as functional medicine, healthy living, yoga meditation, sports, and nutrition are followed, and relevant employees are sent for training.
- **Life Coaching:** Life coaching and mentorship programs are implemented to support employees' personal development.
- **Leadership and Management Training:** Leadership training is organized for employees in managerial positions at Hunza.

4. Fair Working Conditions

Employee rights and social justice are also prioritized at Hunza Camp:

- **Equal Opportunities:** Equal opportunities are provided in career development, regardless of gender, age, ethnicity, or other forms of discrimination.
- **Fair Compensation:** Fair compensation policies are adopted based on employees' skills and experience.
- **Work Safety:** All necessary precautions are taken to ensure a safe and healthy working environment, with full compliance with workplace safety standards.

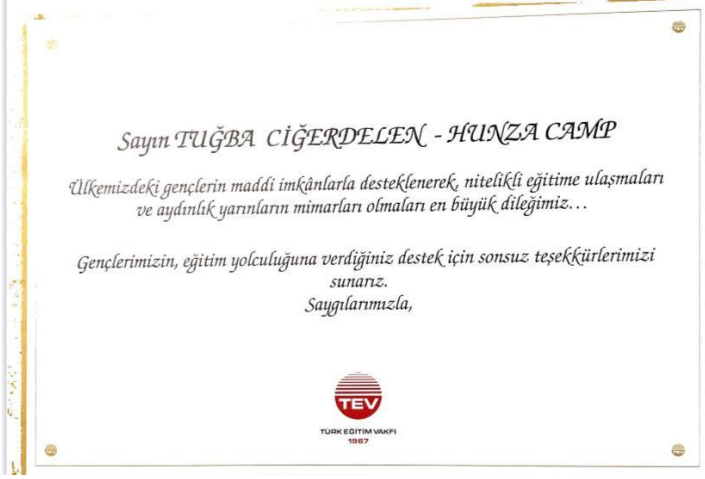
5. Sustainability Within the Community

Hunza engages in various activities to strengthen employees' connections with the community and contribute to sustainable social responsibility projects:

- **Volunteer projects:** Employees are encouraged to participate in projects that provide social benefits. These include environmental clean-ups, recycling projects, and support programs aimed at local communities.
- **Social responsibility:** Hunza collaborates with local communities to develop social responsibility projects that contribute to regional development.

These sustainability principles align with Hunza's overall philosophy, aiming to foster a healthy, happy, and balanced work environment for employees, while also promoting a healthy and sustainable lifestyle for guests.

6. Social Initiatives



Every year, Hunza allocates a portion of its income to provide scholarships for TEV students.

Every year, scholarships are awarded to 10 students studying at Kocaeli University Faculty of Medicine.



PARILTI GÖRMEYEN ÇOCUKLARA DESTEK DERNEĞİ

Derneğimize Göstermiş Olduğunuz
Duyarlılığınızdan Dolayı Sonsuz Teşekkürler.

Teşekkür Belgesi

Sayın, Tuğba CİĞERDELEN

"Arkasında sağlam bir aile, iyi bir eğitmen ve bilinçli bir toplum
olduğunda, engelli çocuk kalıyacaktır..."

**Association for Supporting Children Who
Haven't Seen the Sparkle**



**Book Signing Event with the Art of
Reading Club**



Hunza's Hand Diary (2021)

CANCER FIGHTING ASSOCIATION



Hayriye-Pınar Ciğerdelen Library Opening



Sponsorship of Maşukiye Sports Club



Sponsorship of Nusretiye Sports Club

7. Cultural Studies

It is clear that Hunza Camp Wellness Life Facility will contribute to health tourism through its wellness activities. Health tourism allows individuals to travel from their home countries to other destinations to receive preventive, therapeutic, rehabilitative, and health-promoting services. While regaining their health, they also get acquainted with the beauty of the region and become aware of the cultural heritage left by those who lived in the past, thus contributing to a holistic health approach (body, mind, spirit).

Hunza Camp Wellness Life Facility, which will add value to our country and health tourism, will bring a new dimension to the growing tourism potential of Maşukiye and Sapanca Lake with its activities, lifestyle philosophy, quality of service, and offerings. With its easily accessible location, it engages with Maşukiye, a leader in nature tourism, and its surroundings.

The primary tourist activities in the vicinity of our center are listed below. Once the facility becomes operational, it will support existing tourism and contribute to the promotion of the region.

- **Kartepe Maşukiye:**
 - The must-see iconic spots in Maşukiye include Aygır Stream, Trout Farms, Kartepe Ski Center, Kirazlı Plateau, Soğuksu Plateau, Kuzu Plateau, and Ayrı Gezegen Glass Terrace.
 - **Kirazlı Plateau:** In Maşukiye, this plateau offers a nature trip with a view of the İzmit Bay and Sapanca Lake, where visitors can enjoy hiking trails, picnics, and photography.
 - **Kuzu Plateau:** With its diverse tree species and a 10-kilometer hiking trail, this plateau is perfect for a nature walk, picnics, scenic views, and photography.
 - In Maşukiye, visitors can enjoy ATV safari or horseback riding safaris.
 - Maşukiye's natural beauty also offers activities like Grass Sledding, Paintball, or Ziplining.
- **Kartepe Maşukiye Accommodation:** In the town of Maşukiye, there are hotels, bungalows, and camping areas available for accommodation. These structures, designed in harmony with nature, display traces of wooden architecture.
- **Kartepe Maşukiye Dining Areas:** Numerous countryside cafes, breakfast houses, restaurants, and trout farms serve local flavors in collaboration with the local community and business owners.
- **Kartepe Kuzuyayla Nature Park:** Kuzuyayla Nature Park is located within the boundaries of Kartepe district, Maşukiye, and Derbent towns, on the northwest side of Kartepe with views of the Gulf of İzmit and Lake Sapanca. The park covers an area of 109.7 hectares and has become an attraction for nearby cities due to its proximity to Istanbul, Sakarya, and Bursa, as well as its easy accessibility. Under the management of the General Directorate of National Parks, Kuzuyayla offers sufficient infrastructure and a natural setting for day hikes, photography, wildlife observation, and cycling. There are also countryside restaurants and picnic areas within the park.
- **Kartepe Suadiye Nature Park:** Located within the boundaries of Kartepe district, Suadiye Nature Park boasts a rich natural flora, favorable climate, easy accessibility, and ample opportunities for day trips, picnics, and accommodations, offering a rich recreational potential. The park, also known as

Eğreltidüzü, attracts visitors with its natural charm and offers activities such as day-use picnics, hiking, cycling, and a viewing terrace.

- **Kartepe Ecovillage:** Led by the Kartepe Municipality, this village in Ketenciler Neighborhood is developing into one of Turkey's ecological villages. The ecovillage project was initiated when local women in Ketenciler Village expressed their desire to sell their own products to contribute to their family income. This project eventually expanded to include organic farming in collaboration with the municipality.
- **Kartepe Maşukiye Healing Spring:** Located in Sümbül Çıkmaz, İçmeler Street, Kartepe district, the “Maşukiye Healing Spring” flows from within the shrublands, at an altitude of 50 meters above sea level. The water temperature is around 20 degrees Celsius, and it is said to have beneficial effects on skin and stomach ailments. Additionally, the surrounding area, with waterfalls created by a stream originating in the forest, serves as a picnic area.
- **Kartepe Paragliding:** The paragliding activity, which follows a flight and landing route from Kartepe to Suadiye and Arslanbey, is conducted under the guidance of a professional pilot, offering breathtaking views of the mountains, sea, and lake.
- **Kartepe Ski Center:** At an altitude of 1602 meters, Kartepe opens its ski season in December. With 4 mechanical ski lifts, a 42-kilometer track area, and 14 trails, it has become a new attraction for skiing enthusiasts. Besides skiing, activities like snowboarding, bigfoot, snowmobiling, hiking, and ATV riding are also available. The traditional Kar-Fest, held in Sisli Valley, is a promising brand for festival and snow lovers alike.
- **Kartepe Cable Car:** Initiated by the Kocaeli Metropolitan Municipality, the Kartepe cable car project is underway, set to operate between Derbent and Kuzuyayla. The construction of the cable car, planned to be completed by August 30, 2023, will greatly enhance the region's tourism appeal, adding value to the Derbent Maşukiye area.
- **Kartepe Sarımeşe Oil Wrestling:** Since 2004, oil wrestling events have been held in Kartepe Sarımeşe, attracting significant interest from both the local community and numerous athletes. This event, which receives widespread media coverage, makes a valuable contribution to promoting the region.
- **Başiskele Yuvacık Dam and Surroundings:**
 - **Trekking Trails:** Four different trekking trails from Yuvacık Dam to Camidüzü, Değirmendüzü, Sıcakdere, and Soğukdere, as well as the Beşkayalar National Park, are available.
 - **Beşkayalar Nature Park:** Located in the Yuvacık Camii Düzü Village area, this Nature Park is a mysterious natural wonder with unique natural beauty, breathtaking views, waterfalls, and hidden caves along a deep valley. It is among the top choices for adventure enthusiasts for day visits, hiking, and camping.
 - **Menekşe Plateau:** Known for its lush greenery and dense forests, this plateau is a popular spot for camping and trekking.
 - **Aytepe Plateau:** At an altitude of 900 meters, Aytepe Plateau is one of the favorite spots for visitors with its rich natural surroundings. Like a hidden paradise, it features forested areas, rivers, a dam lake, nature trails, sledding paths, and facilities for both day trips and overnight stays. Researchers indicate that there are three meteor craters and 200-year-old monumental trees on the hills to the west of Aytepe.

- **Inönü Plateau:** Located at an altitude of 1050 meters, this plateau is a remarkable place for camping and trekking.
- **Sapanca:**
 - **Sapanca Lake:** Located right next to Maşukiye, Sapanca Lake is one of Turkey's most beautiful natural spots. It offers various holiday activities with its rest areas, nature parks, and walking trails. Boat and canoe trips are organized here in every season of the year.
 - **Kartepe Sukay Park:** Known for its natural beauty, this lake is a popular attraction in the Kocaeli and Sakarya regions and holds an important place in sports tourism with its water skiing activities. Athletes from all over Turkey participate in the annual water skiing competitions held at Sapanca Lake.
- **Ormanya Wildlife Park:** Established in 2010 under the responsibility of Kocaeli Metropolitan Municipality's Department of Culture and Social Affairs, Ormanya covers an area of 2,000 acres and is divided into 12 regions. With these features, it stands as the largest wildlife park in Europe. In 2020, Ormanya welcomed 5 million visitors. The purpose of Ormanya's establishment is not only to create a protected area for wildlife but also to make this area accessible to visitors. The regions within Ormanya include a children's zoo, picnic area, camping site, forest village, nature school, exhibition hall, sport fishing, bird-watching area, wildlife rescue and rehabilitation center, horseback riding, and nature trails. It is one of Turkey's most important nature tourism destinations.
- **İzmit Sekapark:** Seka Park, located in the city center of İzmit, is one of the largest urban parks in the world. Situated on a total of 580 acres of Seka land, it hosts numerous art activities in Kocaeli, including the Paper Museum, Science Center, Congress Center, workshops for performing and visual arts, exhibition halls, and festival venues. For sports enthusiasts, Sekapark offers a variety of facilities such as basketball courts, tennis courts, a soccer field, mini basketball courts, a skateboarding track, fitness areas, children's playgrounds, indoor sports halls, a bike path, running, jogging, and walking trails..
- **İzmit, Kocaeli Kent Ormanı:** Located in Umuttepe, the Urban Forest is one of the city's most popular recreation and picnic areas. Spanning 300 acres, the forest features a 150 m² pond, a forest house, sports facilities, walking paths, and an observation tower.

Maşukiye, where the center is located, is a prominent tourism region within the Kartepe district of Kocaeli province. Due to its location, it is a frequently chosen area for local tourists. Its position on the Istanbul-Ankara route and its proximity to densely populated cities such as Istanbul, Ankara, Sakarya, Bursa, İzmit, and Yalova make Maşukiye an attractive destination for domestic tourists. Maşukiye leads the way in tourism for Kocaeli province, contributing to the development of nature, cultural, and historical tourism in other districts beyond Kartepe.

The Hunza Camp wellness facility, by focusing on health tourism, will help to promote global recognition of the Maşukiye and Kartepe region. In this context, guests staying at the facility will have the opportunity to enjoy the region's tourist services and experience its local, cultural, and natural richness.



Orhan Oray



Bilal Hakan Karakaya



The works of our various painters in our art street



Authentic elements of traditional and contemporary local culture